

POWERTEX

Shackles PBSP, PBSB, PDSP, PDSB

Product specification
for manufacturing and delivering



POWERTEX Shackles acc. to EN 13889 and AS 2741

Design: According to EN 13889, AS 2741 and US Fed.spec. RR-C-271.

Material: Bow + Bolt 35CrMo, Nut Q235.

Marking: See page 8-10.

Finish standard:

- **Bow surface:** Matt grey. Hot dip galvanized (HDG), min. 54µ.
- **Bolt:** HDG + powder painted blue, RAL 5017 (2t and up). Below 2T electrogalvanized + painted.
- **Nut:** HDG + powder painted red, RAL 3018 (2t and up). Below 2T electrogalvanized + painted.

Finish Blackline:

- **Bow and bolt surface:**

Up to 3/8", matt black powder painted.

1/2" and up, matt black electro galvanized.

Split pin: Stainless Steel 201.

Safety factor: 6:1

Standard: Machinery Directive 2006/42/EC, EN 13889, AS 2741 and to meet performance requirements of US Federal Specification RR-C-271 Grade A, IVA (Bow) & IVB (Dee), with screw pin (Class 2) or safety bolt (Class 3).

Function test: 100% of all threads of bolt and body/nut to assure they can be assembled without tools. Note: High focus on tightness of threads between bolt and nut.

Use temperature: -40°C up to +200°C.

Charpy-V test requirement: min. 42J at -40°C.



PBSP with screw pin



PBSB with safety bolt



PDSP with screw pin

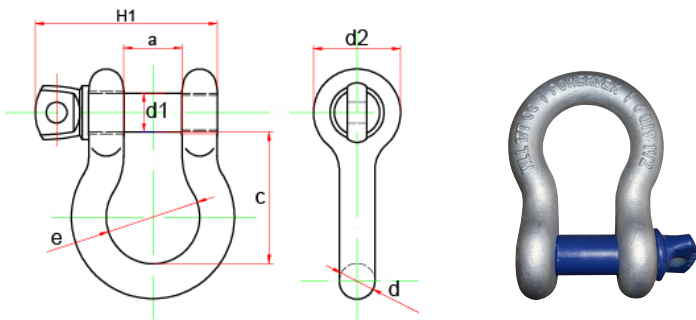


PDSB with safety bolt



PBSP Blackline with screw pin

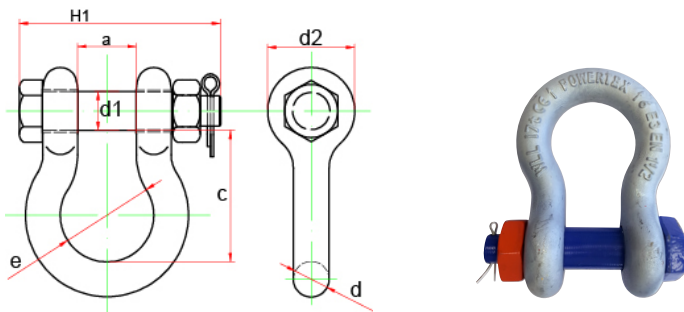
Dimensions POWERTEX Shackle PBSP with screw pin



Part code	WLL ton	Pin Ø d1 mm	Nominal size Inches	a*	c*	d mm	d2	e	H1	Weight kg
420100030880	0,33	6 / 6,3	3/16	10	22,6	5	14,5	15,5	29	0,026
420100050880	0,5	8	1/4	13	29	6,5	17,5	20	38	0,048
420100080880	0,75	9,5	5/16	13,5	31	8	21	21,5	42,5	0,082
420100100880	1	11,2	3/8	17	36,5	10	25	26,2	51,5	0,150
420100150880	1,5	12,7	7/16	18,5	42,9	11,3	27	29,5	58	0,20
420100200880	2	15,8	1/2	20,6	47,75	12,7	30,5	33,3	67	0,30
420100330880	3,25	18,6	5/8	27	60	16	40	43	85	0,65
420100480880	4,75	22	3/4	32	71,5	19	48	51	98,5	1,01
420100650880	6,5	25	7/8	37	84,5	22	54	58	114	1,5
420100850880	8,5	28	1	43,5	96,25	26,5	60	68,5	129,5	2,25
420100950880	9,5	32	1-1/8	48	109	29	68	75	144	3,25
420101200880	12	35	1-1/4	53	120,5	32	76	84	157	4,45
420101350880	13,5	38	1-3/8	59	134	35	84	94	171	5,95
420101700880	17	42	1-1/2	62	148,5	38	92	99	186	7,72
420102500880	25	50	1-3/4	75	178	45	106	128	227	12,64
420103500880	35	55	2	84	197,5	52	122	148	253	18,72
420105500880	55	70	2-1/2	107	269,5	66	145	186	318	37

*Tolerance: +/- 5%

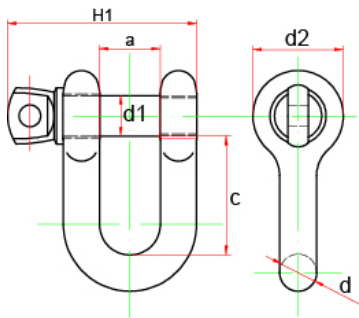
Dimensions POWERTEX Shackle PBSB with safety bolt



Part code	WLL ton	Pin Ø d1 mm	Nominal size Inches	a*	c*	d mm	d2	e	H1	Weight kg
420100050860	0,5	8	1/4	13	29	6,5	17,5	20	42,5	0,05
420100080860	0,75	9,5	5/16	13,5	31	8	21	21,5	47	0,10
420100100860	1	11,2	3/8	17	37	10	25	26,2	56,5	0,15
420100150860	1,5	12,7	7/16	18,5	43	11,3	27	29,5	63,5	0,22
420100200860	2	15,8	1/2	20,6	48	12,7	30,5	33,3	75,5	0,36
420100330860	3,25	18,8	5/8	27	60	16	40	43	92	0,76
420100480860	4,75	22	3/4	32	72	19	48	51	106	1,20
420100650860	6,5	25	7/8	37	85	22	54	58	120	1,80
420100850860	8,5	28	1	43,5	96	26,5	60	68,5	135	2,60
420100950860	9,5	32	1-1/8	48	109	29	68	75	143	3,80
420101200860	12	35	1-1/4	53	121	32	76	84	164	5,30
420101350860	13,5	38	1-3/8	59	134	35	84	94	182	7,20
420101700860	17	42	1-1/2	62	149	38	92	99	195	9,40
420102500860	25	50	1-3/4	75	178	45	106	128	224	15
420103500860	35	55	2	84	197	52	122	148	248	24
420105500860	55	70	2-1/2	107	270	66	145	186	302	45
420108500860	85	80	3	130	325	76	165	205	395	70

*Tolerance: +/- 5%

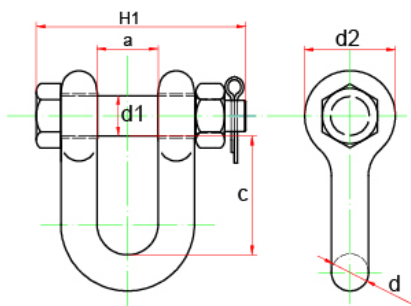
Dimensions POWERTEX Shackle PDSP with screw pin



Part code	WLL ton	Pin Ø d1 mm	Nominal size Inches	a*	c*	d mm	d2	H1	Weight kg
420100050820	0,5	8	1/4	13	22	6,5	17,5	38	0,042
420100080820	0,75	9,5	5/16	13,5	25,5	8	21	42,5	0,068
420100100820	1	11,2	3/8	17	30,9	10	25	51,5	0,130
420100150820	1,5	12,7	7/16	18,5	36,4	11	27	58	0,185
420100200820	2	15,8	1/2	20,6	41,4	12,7	30,5	67	0,29
420100330820	3,25	19	5/8	27	51	16	40	85	0,58
420100480820	4,75	22	3/4	32	63	19	48	98,5	0,93
420100650820	6,5	25	7/8	37	72	22	54	114	1,45
420100850820	8,5	28	1	43,5	81,75	26,5	60	129,5	2,06
420100950820	9,5	32	1-1/8	48	94	29	68	144	2,91
420101200820	12	35	1-1/4	53	102	32	76	157	4,15
420101350820	13,5	38	1-3/8	59	113,5	35	84	171	5,50
420101700820	17	42	1-1/2	62	123	38	92	186	6,97
420102500820	25	50	1-3/4	75	148	45	106	227	11,22

*Tolerance: +/- 5%

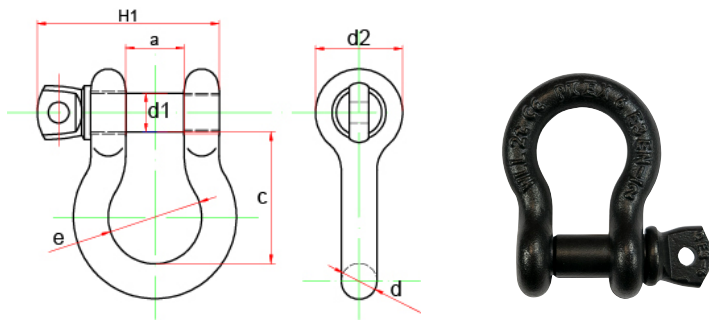
Dimensions POWERTEX Shackle PDSB with safety bolt



Part code	WLL ton	Pin Ø d1 mm	Nominal size Inches	a*	c*	d	d2	H1	Weight kg
420100050850	0,5	8	1/4	13	22	6,5	17,5	42,5	0,05
420100080850	0,75	9,5	5/16	13,5	25,5	8	21	47	0,086
420100100850	1	11,2	3/8	17	30,9	10	25	56,5	0,16
420100150850	1,5	12,7	7/16	18,5	36,4	11	27	63,5	0,215
420100200850	2	15,8	1/2	20,6	41,4	12,7	30,5	75,5	0,340
420100330850	3,25	18,8	5/8	27	51	16	40	92	0,6
420100480850	4,75	22	3/4	32	63	19	48	106	1,02
420100650850	6,5	25	7/8	37	72	22	54	120	1,6
420100850850	8,5	28	1	43,5	81,75	26,5	60	135	2,3
420100950850	9,5	32	1-1/8	48	94	29	68	143	3,33
420101200850	12	35	1-1/4	53	102	32	76	164	4,30
420101350850	13,5	38	1-3/8	59	113,5	35	84	182	5,87
420101700850	17	42	1-1/2	62	123	38	92	195	7,6
420102500850	25	50	1-3/4	75	148	45	106	224	11,7
420103500850	35	55	2	84	174,5	52	122	248	17,84

*Tolerance: +/- 5%

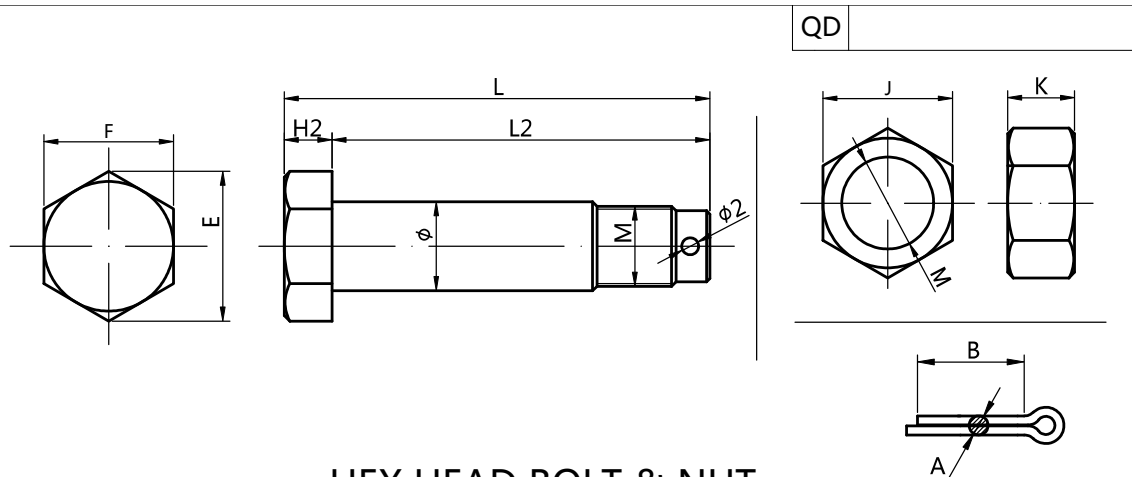
Dimensions POWERTEX Shackle PBSP Blackline with screw pin



Part code	WLL ton	Pin Ø d1 mm	Nominal size Inches	a*	c*	d mm	d2	e	H1	Weight kg
420100050840	0,5	8	1/4	13	29	6,5	17,5	20	38	0,048
420100080840	0,75	9,5	5/16	13,5	31	8	21	21,5	42,5	0,082
420100100840	1	11,2	3/8	17	36,5	10	25	26,2	51,5	0,150
420100200840	2	15,8	1/2	20,6	47,75	12,7	30,5	33,3	67	0,30
420100330840	3,25	19	5/8	27	60	16	40	43	85	0,65
420100480840	4,75	22	3/4	32	71,5	19	48	51	98,5	1,01

*Tolerance: +/- 5%

Dimensions hex head bolt and nut

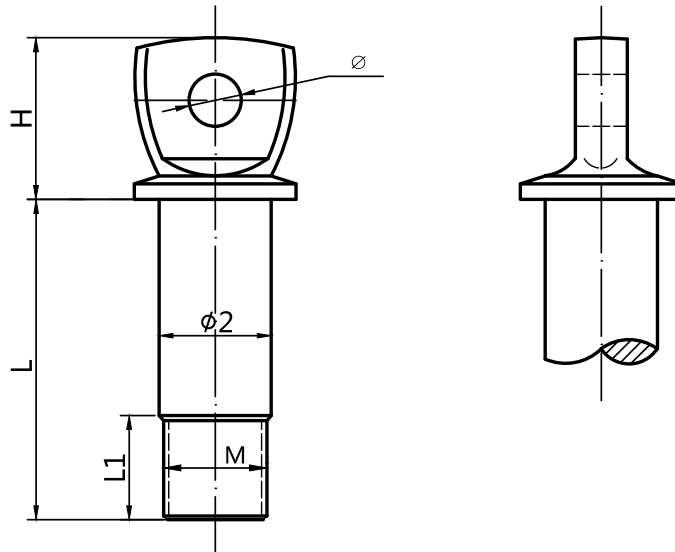


HEX HEAD BOLT & NUT

pin size	L	L2	F	E	ϕ	$\phi 2$	H2	NUT JXK	M	Outside Dia	Inside Dia	AXB
1/4	33.5	29.5	10	11.1	$6^{+0.3}_{-0.1}$	1.7	4 ± 0.3	10X5	6x1	$5.5^{+0.2}_{-0.1}$	5 ± 0.1	1.6X10
5/16	42.5	37.5	11.8	13.1	$8^{+0.3}_{-0.1}$	2.5	5 ± 0.3	14X6	8x1.25	$7.4^{+0.2}_{-0.1}$	6.8 ± 0.2	2X15
3/8	47	42	14	16	$9.5^{+0.3}_{-0.1}$	3	5 ± 0.3	17X8	10x1.5	9.3 ± 0.3	8.5 ± 0.2	2.5X15
7/16	60	$54.5^{+0.5}_{-0}$	16.5	19	11.2 ± 0.3	3	5.5 ± 0.3	19X9	12x1.75	11.2 ± 0.3	10.3 ± 0.3	2.5X17
1/2	65	$57^{+0.8}_{-0.3}$	19	21.9	12.7 ± 0.3	3.2	6.5 ± 0.5	19X9	12x1.75	11.2 ± 0.3	10.3 ± 0.3	3X20
5/8	73	$65^{+1}_{-0.5}$	23	26.5	$15.8^{+0.3}_{-0.1}$	4.2	7.5 ± 0.5	24X12	16x2	$15^{+0.4}_{-0}$	14 ± 0.3	4X25
3/4	92	$82.5^{+1}_{-0.5}$	27	31.1	18.8 ± 0.3	4.2	9 ± 0.5	26X13	18x2.5	$17^{+0.5}_{-0.3}$	15.5 ± 0.4	4X25
7/8	106	$96^{+1}_{-0.5}$	32	36.9	$22^{+0.5}_{-0}$	4.2	10 ± 0.5	31X15	22x2.5	$21.5^{+0.4}_{-0.2}$	19.2 ± 0.4	4X30
1"	120	108 ± 1	35	40.4	$25^{+0.5}_{-0}$	5.2	12 ± 0.8	34X16	24x3	$23^{+0.5}_{-0.4}$	20.5 ± 0.4	5X40
1-1/8	135	122 ± 1	40	46	$28^{+0.8}_{-0}$	5.2	13 ± 0.8	40X19	27x3	26.4 ± 0.4	24 ± 0.3	5X40
1-1/4	143	$137^{+1.5}_{-0.5}$	46	51.5	$32^{+0.8}_{-0.2}$	5.2	14 ± 0.8	45X19	30x3.5	$29^{+0.5}_{-0.4}$	26.5 ± 0.4	5X45
1-3/8	164	$149^{+1.5}_{-0.5}$	50	57.7	$35^{+0.8}_{-0.2}$	5.2	15 ± 0.8	48X20	33x3.5	32 ± 0.5	29.4 ± 0.4	5X45
1-1/2	182	$165^{+1.5}_{-0.5}$	55	63.5	$38^{+0.8}_{-0.2}$	6.5	$17^{+1}_{-0.5}$	54X21	36x4	$35^{+0.8}_{-0.5}$	31.8 ± 0.8	6.3X55
1-5/8	195	$176^{+1.5}_{-0.5}$	60	69.3	42^{+1}_{-0}	6.5	$19^{+1}_{-0.5}$	58X22	39x4	$38^{+0.8}_{-0.3}$	35 ± 0.8	6.3X55
2"	224	$205^{+1.5}_{-0.5}$	70	80.8	50^{+1}_{-0}	6.5	$19^{+1}_{-0.5}$	68X24	45x4.5	44 ± 0.8	40.5 ± 0.8	6.3X65
2-1/4	248	$228^{+1.5}_{-0.5}$	76	87.8	55^{+1}_{-0}	8.5	$20^{+1}_{-0.5}$	77X26	52x5	50.8 ± 0.8	47 ± 0.8	8X80
2-3/4	307	$285^{+1.5}_{-0.5}$	83	95.8	$70^{+1.2}_{-0}$	8.5	$22^{+1}_{-0.5}$	90X30	68x6	$66.5^{+1}_{-0.5}$	62 ± 1	8X80
3-1/8	395	355 ± 2	105	121.24	$80^{+1.2}_{-0}$	12.5	$36^{+1.5}_{-0.5}$	110X47	80x6	$78.5^{+1}_{-0.5}$	73.5 ± 1	10X100

dimension tolerance $\pm 5\%$ (except for the special marked parts)

Dimensions screw pin



SCREW PIN FOR BOW AND CHAIN SHACKLE

pin size	L	H	L1	φ	φ2	M	Outside Dia
1/4	21±0.5	9	5.5±0.5	3.5	6 ^{+0.4} _{-0.1}	USA 1/4-20UNC	5.7±0.2
5/16	26±0.5	13	7±0.5	4	8 ^{+0.3} _{-0.1}	USA 5/16-18UNC	7.5±0.2
3/8	31±0.5	13	9±0.5	4.5	9.5 ^{+0.3} _{-0.1}	USA 3/8-16UNC	9±0.3
7/16	38±0.5	15.5	10.5±0.5	5	11.2±0.3	M12x1.75	11.2±0.3
1/2	42±0.5	17.5	11.5±0.5	6	12.7±0.3	USA 1/2-13UNC	12±0.3
5/8	46.5±0.5	22	13.5±0.5	7	15.8±0.3	M16x2	15 ^{+0.4} ₋₀
3/4	61±0.5	24	17.5±0.5	9	18.8 ^{+0.5} _{-0.2}	USA 3/4-10UNC	18 ^{+0.5} _{-0.3}
7/8	70.5±0.5	28	19.5±0.5	10	22 ^{+0.5} _{-0.1}	M22x2.5	21 ^{+0.5} _{-0.3}
1"	81±1	33	23.5±0.5	10	25 ^{+0.5} _{-0.1}	M27x3	25.5 ^{+0.5} _{-0.3}
1-1/8	93.5 ^{+1.5} ₋₁	36	26.5±0.5	11	28 ^{+0.8} _{-0.2}	M30x3.5	28.5 ^{+0.5} _{-0.3}
1-1/4	106 ^{+1.5} ₋₁	38	30 ⁺¹ _{-0.5}	12	32 ^{+0.8} _{-0.2}	M33x3.5	31.5 ^{+0.5} _{-0.3}
1-3/8	117 ^{+1.5} ₋₁	40	33 ⁺¹ _{-0.5}	14.5	35 ^{+0.8} _{-0.2}	M36x4	34.5±0.5
1-1/2	129 ^{+1.5} ₋₁	42	36 ⁺¹ _{-0.5}	16	38 ^{+0.8} _{-0.2}	M39x4	37.5 ^{+0.8} _{-0.5}
1-5/8	138 ^{+1.5} ₋₁	48	39 ⁺¹ _{-0.5}	17.5	42 ⁺¹ ₋₀	M42x4.5	40.5 ^{+0.8} _{-0.5}
2"	165±2	60	46 ⁺¹ _{-0.5}	20	50 ⁺¹ ₋₀	M50x4	48.5±0.8
2-1/4	186±2	67	50±1.5	20.5	55 ⁺¹ ₋₀	M56x4	54±0.8
2-3/4	232±2	86	64±1.5	27.5	70 ^{+1.2} ₋₀	M70x4	67.5 ⁺¹ _{-0.5}
3-1/8	282±2	100	78.5 ⁺² ₋₀	32	80 ^{+1.2} ₋₀	M80x4	78.5±1

dimension tolerance ±5% (except for the special marked parts)

Marking

Brand marking

- 5/8" and up BOW: POWERTEX
- 1/2" BOW: PTEX
- 3/16" to 7/16" BOW: PX
- 1 1/8" to 2 1/2" DEE: POWERTEX
- 5/8" to 1" DEE: PTEX
- 1/4" to 1/2" DEE: PX

All shackles marked with  and 

Up to 1,5t UKCA marked with raised text as one row logo (use same font as original 2 row).
2t and up UKCA marked with raised text as two row logo

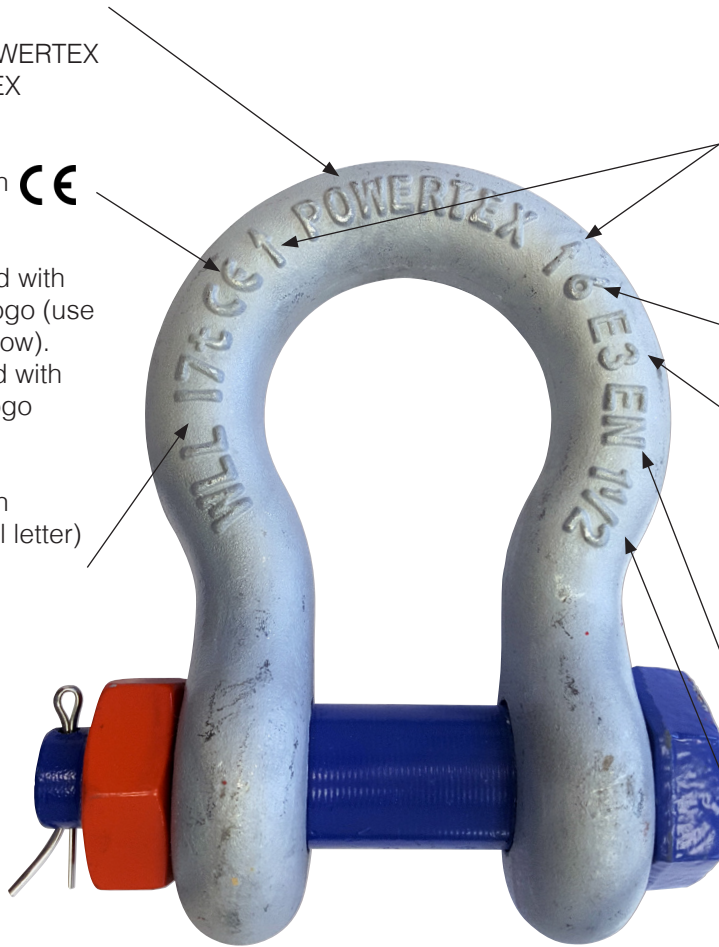
All shackles marked with WLL in tonnes (**t** in small letter)
Example: WLL 17t



Screw pin



Raised pads
For adding own stamping in the correct place.
Reduces "stress" when hard stamping.
Valid for size 5/8" and up.



45° angle indicators
2 arrows indicating 45° angles from vertical.
Valid for BOW type and size 1 1/8" to 3"

All shackles marked with Grade **(6)**

All shackles marked with BATCH information:
(Tracking to raw material)
(E=2016) I=2020 J=2021 etc.
3=batch (batch no. actual year)
Example: E3 means 2016 batch no. 3.

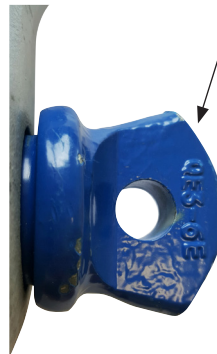
EN Marking
for EN 13889

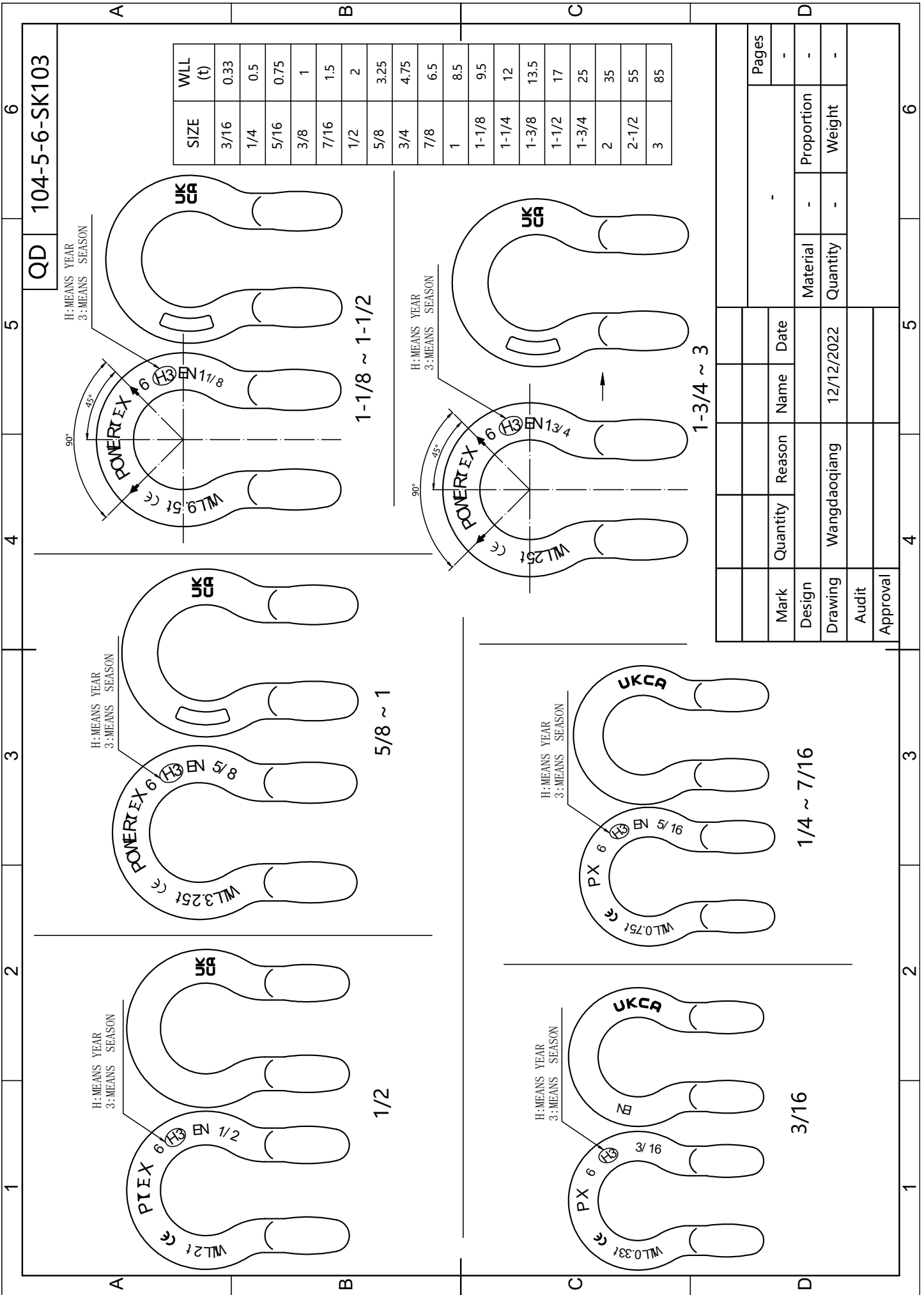
All shackles marked with dimension in inches
Example: **1 1/2**



Marking on bolts
All shackles bolt marked with Manufacturer ID (**Q**) and batch information (Tracing to raw material)

Shackle bolts marked with Grade **(6)**
Example: QE2-6 (Size 5/8" and up)
(E=2016, 2=running number, 6=Grade)
Example: Q6 (Small sizes up to 1/2")





QD 104-5-6-SK103

SIZE	WLL (t)
3/16	0.33
1/4	0.5
5/16	0.75
3/8	1
7/16	1.5
1/2	2
5/8	3.25
3/4	4.75
7/8	6.5
1	8.5
1-1/8	9.5
1-1/4	12
1-3/8	13.5
1-1/2	17
1-3/4	25
2	35
2-1/2	55
3	85

Pages			
			-
Mark	Quantity	Reason	Name
Design			Date
Drawing	Wangdaoqiang		12/12/2022
Audit			
Approval			
		Material	Proportion
		Quantity	Weight

1	2	3	4	5	6																																		
QD 104-5-6-SK110																																							
A	B	C	D																																				
<table border="1" style="width: 100%; border-collapse: collapse;"> <tr> <th>SIZE</th> <th>WLL (t)</th> </tr> <tr> <td>1/4</td> <td>0.5</td> </tr> <tr> <td>5/16</td> <td>0.75</td> </tr> <tr> <td>3/8</td> <td>1</td> </tr> <tr> <td>7/16</td> <td>1.5</td> </tr> <tr> <td>1/2</td> <td>2</td> </tr> <tr> <td>5/8</td> <td>3.25</td> </tr> <tr> <td>3/4</td> <td>4.75</td> </tr> <tr> <td>7/8</td> <td>6.5</td> </tr> <tr> <td>1</td> <td>8.5</td> </tr> <tr> <td>1-1/8</td> <td>9.5</td> </tr> <tr> <td>1-1/4</td> <td>12</td> </tr> <tr> <td>1-3/8</td> <td>13.5</td> </tr> <tr> <td>1-1/2</td> <td>17</td> </tr> <tr> <td>1-3/4</td> <td>25</td> </tr> <tr> <td>2</td> <td>35</td> </tr> <tr> <td>2-1/2</td> <td>55</td> </tr> </table>						SIZE	WLL (t)	1/4	0.5	5/16	0.75	3/8	1	7/16	1.5	1/2	2	5/8	3.25	3/4	4.75	7/8	6.5	1	8.5	1-1/8	9.5	1-1/4	12	1-3/8	13.5	1-1/2	17	1-3/4	25	2	35	2-1/2	55
SIZE	WLL (t)																																						
1/4	0.5																																						
5/16	0.75																																						
3/8	1																																						
7/16	1.5																																						
1/2	2																																						
5/8	3.25																																						
3/4	4.75																																						
7/8	6.5																																						
1	8.5																																						
1-1/8	9.5																																						
1-1/4	12																																						
1-3/8	13.5																																						
1-1/2	17																																						
1-3/4	25																																						
2	35																																						
2-1/2	55																																						
<table border="1" style="width: 100%; border-collapse: collapse;"> <tr> <th>Mark</th> <th>Quantity</th> <th>Reason</th> <th>Name</th> <th>Date</th> <th>Pages</th> </tr> <tr> <td>Design</td> <td></td> <td></td> <td></td> <td></td> <td>-</td> </tr> <tr> <td>Drawing</td> <td>Wangdaoqiang</td> <td></td> <td>12/12/2022</td> <td></td> <td>-</td> </tr> <tr> <td>Audit</td> <td></td> <td></td> <td></td> <td></td> <td>-</td> </tr> <tr> <td>Approval</td> <td></td> <td></td> <td></td> <td></td> <td>-</td> </tr> </table>						Mark	Quantity	Reason	Name	Date	Pages	Design					-	Drawing	Wangdaoqiang		12/12/2022		-	Audit					-	Approval					-				
Mark	Quantity	Reason	Name	Date	Pages																																		
Design					-																																		
Drawing	Wangdaoqiang		12/12/2022		-																																		
Audit					-																																		
Approval					-																																		
1	2	3	4	5	6																																		

PP-bag label

Printed labels on strong non-woven fabrics (not able to tear), for sewing on top of the PP-bags. (size width 100 mm x height 170 mm) to be placed on the backside of the bag label showing:

- Model PBSP
- Size 5/8"
- WLL 3,25T
- Batch No.: digits + barcode (Code 128 standard)
- Part Code.: digits + barcode (Code 128 standard)
- SCM No.: digits + barcode (Code 128 standard)

CE  UK CA

POWERTEX

SHACKLE
 MODEL **PBSP**
 SIZE: 5/8" | WLL 3,25T
 BATCH NO: I1




11

PART CODE: 420100330880

420100330880

QTY: 25 PCS
 SCM NO: 51358


51358




www.powertex-products.com

CE  UK CA

POWERTEX

SHACKLE
 MODEL **PBSB**
 SIZE: 5/8" | WLL 3,25T
 BATCH NO: I1




11

PART CODE: 420100330860

420100330860

QTY: 25 PCS
 SCM NO: 51358


51358




www.powertex-products.com

CE  UK CA

POWERTEX

SHACKLE
 MODEL **PBSP BLACKLINE**
 SIZE: 5/8" | WLL 3,25T
 BATCH NO: I1




11

PART CODE: 420100330840

420100330840

QTY: 25 PCS
 SCM NO: 51358


51358




www.powertex-products.com

CE  UK CA

POWERTEX

SHACKLE
 MODEL **PDSB**
 SIZE: 5/8" | WLL 3,25T
 BATCH NO: I1




11

PART CODE: 420100330850


420100330850

QTY: 25 PCS
 SCM NO: 51332


51332






www.powertex-products.com

CE  UK CA

POWERTEX

SHACKLE
 MODEL **PDSP**
 SIZE: 5/8" | WLL 3,25T
 BATCH NO: I1







11

PART CODE: 420100330820

420100330820

QTY: 25 PCS
 SCM NO: 51332


51332

www.powertex-products.com

Packing in PP bags & EUR pallets

Fig. 1 The specified number of shackles packed in dark blue breathable PP-bags together with 1 pc POWERTEX 2.2 certificate & EC Declaration (placed in transparent plastic holder).

Attach PP-bag label when closing the bag by sewing.



Fig. 2 The PP-bags to be packed on strong wooden EUR pallet type with strong wooden frames that can be reused at EDC.

Important that one pallet contains only one product type / product size and one batch code.



Packing type and quantity

WLL ton	Quantity in PP bag	PBSP Bag weight (kg)	PBSB Bag weight (kg)	PDSP Bag weight (kg)	PDSB Bag weight (kg)
0,33T	200	5,20	-	-	-
0,5T	200	9,60	10,0	8,40	10,00
0,75T	100	8,20	10,0	6,80	8,60
1,0T	100	15,00	15,0	13,00	16,00
1,5T	100	20,00	22,0	18,50	21,50
2,0T	50	15,00	18,0	14,50	17,00
3,25T	25	16,25	19,0	14,50	15,00
4,75T	15	15,15	18,0	13,95	15,30
6,5T	10	15,00	18,0	14,50	16,00
8,5T	8	18,00	20,8	16,48	18,40
9,5T	5	16,25	19,0	14,55	16,65
12,0T	4	17,80	21,2	16,60	17,20
13,5T	3	17,85	21,6	16,50	17,61
17T	2	15,44	18,8	13,94	15,20
25T	1	12,64	15,0	11,22	11,70
35T	1	18,72	24,0	-	17,84
55T	1	37,00	45,0	-	-
85T	1	-	70,0	-	-

Packing on pallet

Wooden pallets must undergo a pest control treatment before shipment

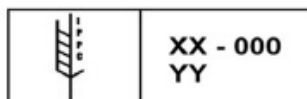
In order to comply with the IPPC EU directive, 2004/102/EC, the following measures must be taken for wood packaging material (thicker than 6mm) entering the EU:

- The wood must be either heat treated or fumigated with methyl bromide, in line with ISPM 15 procedures (Approved treatments associated with wood packaging material, p. 12 https://www.ippc.int/static/media/files/publications/en/2014/06/30/ispm_15_2009_en_2014-06-16.pdf).
- It must be officially marked with the ISPM15 stamp
- It must be debarked.

Boxes strapped and wrapped on EUR quality pallet.



Example:
ISPM 15 stamp



2.2 certificate & EC Declaration

To be placed in each PP bag.

Yellow marked fields to be filled out by manufacturer

POWERTEX

Address / Adresse / Dirección / Anschrift / Adresse / Aadress / Osoite / Adresas / Adrese / Adres / Adresse / Адрес / Adress / Adres

SCM CITRA OY, Aessoriinkatu 3-7, FI-20780 Kaarina, Finland, www.powertex-products.com

2.2 Certification acc to EN 10204

We hereby confirm that delivered products have been manufactured and tested to meet the requirements of Machinery Directive 2006/42/EC, EN13889, AS2741 and to fulfill SCM Citra specification. Each product has been examined and found to be free from defects.
Min breaking load (MBL) > 6 x WLL. Proof load level = 2 x WLL with permanent deformation max 1 %

Machinery description (1)

Batch no. - Quantity (pcs) / N° de lot - Quantité (pièces) / Lote nº - Cantidad (pzas) / Chargennr. - Menge (Stück) / Batch nr. - Antal (stk.) / Partii nr. - Kogus (tk) / Eränumero - Määrä (kpl) / Partijos Nr. - Kiekis (vnt.) / Sērijas numurs - Daudzums (gab.) / Batch nº - Hoeveelheid (stuks) / Produksjonsserie (batch) - Antall (stk.) / Номер - количество, штук / Batch Nr./antal (st)	Batch no	Qty
	A1	25
	A2	25
Shackle type / Type de manille/ Clase de grillete / Schäkel Typ / Sjækkel type / Seekli tüüp / Sakkeli / Jungties tipas / Šeikeļa tips / Type sluiting / Sjakkel type / Тип скобы / Schackel-typ / Typ szekli	PBSB Bow type Safety bolt + nut Grade 6	
WLL (Working Load Limit) / Charge de travail maximale / Carga límite de trabajo / MWB (Maximale werkbelasting) / WLL (maksimalbelastning) / Maksimal belastning (WLL) / Maksimaalne töökoormus (WLL) / Enimmäiskuorma (WLL) / Maksimālā darba slodze / WLL (saugi darbinē apkrova) / Maksimal arbeidslast (WLL) / Максимальная грузоподъемность / Maxlast / Dopuszczalne Obciążenie Robocze (DOR). (ton)	2,0 t	
Size / Dimension / Tamaño / Nenngröße / Størrelse / Suurus / Koko / Dydis / Izmērs / Afmeting / Størrelse / Грузоподъемность / Storlek / Rozmiar	1/2"	
SCM Citra number	XXXXXX	

GB	I certify that the above machinery has been tested and thoroughly examined. No defects or permanent deformation were found. WLL is as stated.
FR	Je certifie que l'équipement susmentionné a été testé et minutieusement examiné. Aucun défaut ni aucune déformation permanente n'ont été décelés C.M.U. comme indiquée.
ES	Certifico que la maquinaria anterior ha sido probada y examinada detenidamente. No se encontraron defectos o deformaciones permanentes. La CMT es la que se indica.
DE	Ich versichere, dass die oben angegebene Maschine getestet und gründlich kontrolliert worden ist. Es wurden keine Defekte oder permanente Verformungen festgestellt. Die Tragfähigkeit ist wie angegeben.
DK	Jeg bekræfter, at ovennævnte udstyr er testet og grundigt undersøgt. Der blev ikke fundet fejl eller permanent deformation. Maksimalbelastningen (WLL) er som angivet.
EE	Kinnitan, et eespool nimetatud masinaid on katsetatud ja põhjalikult kontrollitud. Defekte ja jääkdeformatsiooni ei tuvastatud. WLL vastab märgitule.
FI	Vakuutan, että yllämainittu kone on testattu ja tarkastettu perusteellisesti. Siitä ei löytenyt mitään vikoja tai pysyviä muodonmuutoksia. Enimmäiskuorma vastaa ilmoitettua.
LT	Patvirtinu, kad aukščiau nurodytas įranginys buvo nuodugnai patikrintas ir išbandytas. Defektų ir liekamųjų deformacijų nerasta. Saugi darbinė apkrova yra tokia. Kaip nurodyta.
LV	Apliecinu, ka iepriekš minētās iekārtas ir izmēģinātas un rūpīgi pārbaudītas. Defekti vai pastāvīgas deformācijas netika konstatētas. Maksimālā darba slodze ir norādīta tabulā.
NL	Ik verklaar hierbij dat de bovenstaande apparatuur getest en grondig onderzocht is. Er zijn geen gebreken of blijvende vervormingen gevonden. MWB is als aangegeven.
NO	Jeg bekrefter at maskinene ovenfor er testet og grundig undersøkt. Det ble ikke funnet defekter eller permanente mangler. Maksimal arbeidslast (WLL) er som angitt.
RU	Я удостоверяю, что вышеперечисленные изделия протестированы и тщательно осмотрены. Никакие дефекты, а также остаточная деформация не обнаружены. Максимальная грузоподъемность соответствует заявленной.
SE	Jag försäkrar att ovan angivna maskin har testats och noggrant kontrollerats. Inga defekter eller permanenta deformationer har framkommit. Maxlasten är den angivna.
PL	Oświadczam, że powyższe urządzenie zostało przetestowane i dokładnie sprawdzone. Nie stwierdzono wad ani trwałych deformacji. DOR jest taki, jak podano

EC Declaration Of Conformity

Déclaration de conformité CE / Declaración de conformidad CE / EG-Konformitätserklärung / EF-Overensstemmelseserklæring / EÜ vastavusdeklaratsioon / EY-vaatimustenmukaisuusvakuutus / EB atitikties deklaracija / EK atbilstības deklarācija / EG-verklaring van overeenstemming / EU Samsvarserklæring / EC декларация соответствия / EG-försäkran om överensstämmelse / Deklaracja zgodności CE

GB	We herewith declare that the machinery is in conformity with all relevant provisions in Directive 2006/42/EC and that the following harmonized standards have been applied: EN 13889
FR	Nous déclarons par la présente que la machine est conforme à toutes les dispositions applicables de la directive 2006/42/CE et que les normes suivantes ont été appliquées : EN 13889
ES	Por la presente declaramos que la maquinaria cumple con todas las disposiciones pertinentes de la Directiva 2006/42/CE y que se han aplicado las siguientes normas armonizadas: EN 13889
DE	Hiermit erklären wir, dass die Maschine mit allen relevanten Bestimmungen der Richtlinie 2006/42/EG übereinstimmt und dass die folgenden harmonisierten Normen angewendet wurden: EN 13889
DK	Jeg erklærer hermed, at det specificerede udstyr er i overensstemmelse med Rådets direktiv 2006/42/EF, og følgende harmoniserede standarder: EN 13889
EE	Käesolevaga kinnitame, et seade vastab kõigile direktiivi 2006/42/EÜ asjakohastele sätetele ja et on rakendatud järgmisi ühtlustatud standardeid: EN 13889
FI	Vakuutamme, että kone on kaikkien direktiivin 2006/42/EY asiaankuuluvien säännösten mukainen ja että seuraavia yhdenmukaistettuja standardeja on sovellettu: EN 13889
LT	Patvirtiname, kad įrenginys atitinka visas mašinų direktyvos 2006/42/EB nuostatas ir atitinka standartui: EN 13889
LV	Mēs apliecinam, ka minētais ceļšanas aprīkojums / iekārta ir izgatavots un pārbaudīts saskaņā ar spēkā esošajām prasībām: Mašīnbūves direktīva 2006/42/EK un EN 13889
NL	Hierbij verklaren wij dat de apparatuur in overeenstemming is met alle relevante bepalingen van Richtlijn 2006/42/EG en dat de volgende geharmoniseerde normen zijn toegepast: EN 13889
NO	Jeg erklærer herved at maskiner spesifisert ovenfor er i samsvar med de grunnleggende helse-og sikkerhetsregler i Maskindirektivet 2006/42/EC og følgende harmoniserte standarder er anvendt: EN 13889
RU	Настоящим мы заявляем, что оборудование соответствует всем соответствующим положениям Директивы 2006/42/ЕС и что были применены следующие стандарты: EN 13889
SE	Vi försäkrar härmed att den angivna maskinen överensstämmer med alla tillämpliga bestämmelser i Maskindirektivet 2006/42/EG och att följande harmoniserade standarder är tillämplade: EN 13889
PL	Niniejszym oświadczamy, że urządzenie jest zgodna ze wszystkimi odpowiednimi przepisami dyrektywy 2006/42/WE oraz spełniając wymagania normy zharmonizowanej: EN 13889
Person responsible for the documentation / Responsable de la documentation / Responsable de la documentación / Documentationsverantwortlicher / Dokumentations ansvarlig / Dokumentatsiooni eest vastutav isik / Vastuuhenkilö / Atsakingas asmuo / Atbildīgais par dokumentāciju / Verantwoordelijke persoon voor documentatie / Ansvarlig person for dokumentasjon / Ответственный за документацию / Ansvarig person för dokumentation / Osoba odpowiedzialna za dokumentację	
Philip Eliasson	
Signature / Signature / Firma / Unterschrift / Underskrift / Allkiri / Allekirjoitus / Parašas / Paraksts / Handtekening / Signatur / Подпись / Namnteckning / Podpis	
Date / Date / Fecha / Datum / Dato / Kuupäev / Päiväys / Data / Datums / Datum / Dato / Дата / Datum / Data	
//****	
Place / Lieu / Lugar / Ort / Sted / Koht / Paikka / Vieta / Vieta / Plaats / Sted / Место / Plats / Miejsce	
Kaarina Finland	
Address / Adresse / Dirección / Anschrift / Adresse / Aadress / Osoite / Adresas / Adresse / Adres / Adresse / Адрес / Adress / Adres	
SCM CITRA OY, Aseessorinkatu 3-7, FI-20780 Kaarina, Finland www.powertex-products.com	

UK Declaration of Conformity

This certificate meets the requirements of the Supply of Machinery (Safety) Regulations 2008

Description of the Machinery:	See (1)
Standards applied:	BS EN 13889
British National Standards and any other Technical Specifications applied:	
I declare that the above equipment meets the Essential Health and Safety requirements of the Supply of Machinery (Safety) Regulations 2008 and Section 6 of the Health and Safety at Work Etc. Act 1974.	
Person responsible for the declaration:	Philip Eliasson
Signature:	
Date:	**/**/****
Place:	Kaarina Finland
Name and address of manufacturer:	SCM CITRA OY, Aseessorinkatu 3-7, FI-20780 Kaarina, Finland www.powertex-products.com

2(2)

Fill in date of production

Technical file

Documentation

With each delivery the supplier shall send the following documents in English:

- Manufacturer's Declaration of Conformity
- Manufacturer's Certificate stating Product code, Serial number, WLL, Safety factor, Min. breaking force and that the product conforms to EN 13889 and US Federal Specification RR-C-271 Grade A, type IVA (Bow) & IVB (Dee), with Screw pin (Class 2) or Safety bolt (Class 3).
- Verification test results:
 - Breaking test result
 - Proof force used
 - Chemical analysis bolt and bow
 - Fatigue test result
 - Impact test result
 - 100% dimensional check of inside width "a" to meet the tolerance requirements of this specification

Technical file

The technical file shall at minimum comprise the following for each supplier:

- General description of the product or drawing
- User instruction
- Manufacturer's Declaration of conformity
- Manufacturer's Certificate stating Product code, Serial number, WLL, Safety factor, Min. breaking force and that the product conforms to EN 13889 and US Federal Specification RR-C-271 Grade A, type IVA (Bow) & IVB (Dee), with Screw pin (Class 2) or Safety bolt (Class 3).
- Test methods
- Actual verification test results
- Manufacturing process
- Calibration protocol for test machines used
- Material certificate

If possible also

- Risk assessment (not necessary if product follows EN 13889)
- Strength calculations (alternative to actual tests for very large products)
- Third party product type testing certificate

Product Sustainability file

To ensure a safe import into the EU market the supplier must declare each product or product group in accordance with SCM Citra's document:
Product sustainability requirements SCMcitra

